

1. PRODUCT SUMMARY

The Primex Spider Spool is designed to route, manage and store fiber. It provides cable bend radius protection to maintain proper optical integrity of fiber routed around the spool. It accommodates fiber diameters up to 3mm.

Two arm sizes and the ability to stack units provide scalability and flexibility for a range of applications.

Used with Primex stackable trays, the spool provides quick and easy front access eliminating any risk to loose fibers upon release of the splice tray.

2. PRODUCT DIMENSIONS

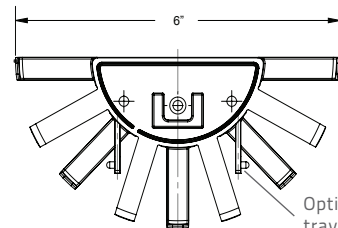
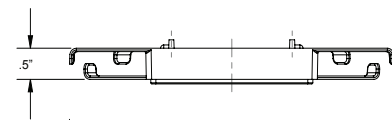
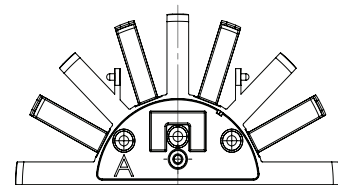
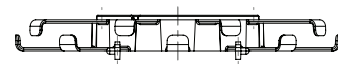
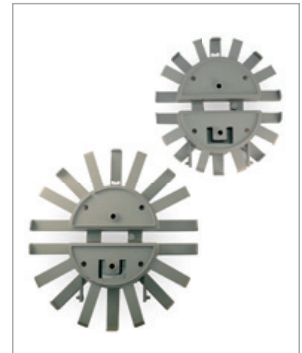
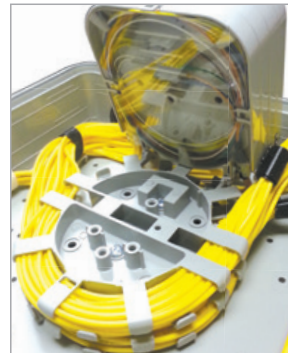
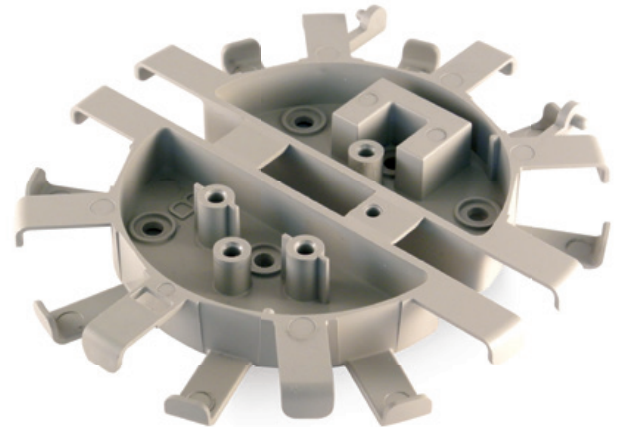
DEPTH: 0.5" / DIAMETER: 4.8" or 6.8"

3. FEATURES & BENEFITS

- Mounting hole pattern provides quick and easy installation.
- Maintains safe fiber bend radius.
- Mounting tabs enable splice tray to easily attach to the spool.
- 2 arm sizes: 1.4" long or 0.8" long manage and contain loose fiber.
- Easily stackable for scalable storage.
- Flush-mounted against enclosure back to maximize workable space.
- "Front push" style release for fiber tray.
- Available in PVC for outdoor or ABS for indoor applications.
- Optional with or without splice tray mounts.

4. PART NUMBER

Part #	Description
125-0928	Hinged Fiber Spool 3" PVC - Short Legs
125-0929	Fiber Spool 3" PVC - Short Legs
125-0932	Hinged Fiber Spool 3" ABS - Short Legs
125-0933	Fiber Spool 3" ABS - Short Legs
125-0930	Fiber Spool 3" PVC - Long Legs
125-0931	Hinged Fiber Spool 3" ABS - Long Legs
125-0934	Fiber Spool 3" ABS - Long Legs
125-0927	Fiber Spool 3" PVC - Long Legs



FOR MORE INFORMATION CONTACT:

20160 92A Avenue Langley BC V1M 3A4 Canada
 1.877.881.7875 info@primexfits.com primexfits.com