

1. PRODUCT SUMMARY

The Primex Reducers for Media Distribution Enclosures allow for secure conduit placement within an installation.

Two reducer sizes provide both 3/4" and 1/2" conduit home runs back to the structured wiring enclosure.

Fits models: P2100, P3000, P4200, P6300

2. PRODUCT DIMENSIONS

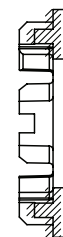
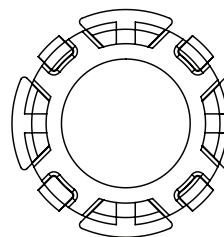
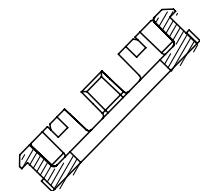
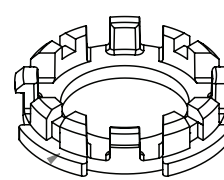
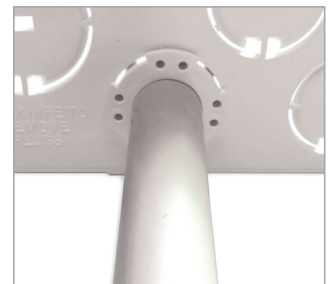
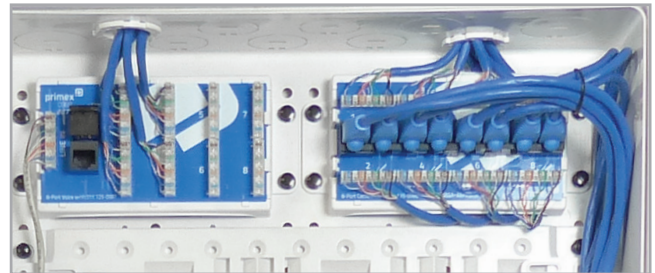
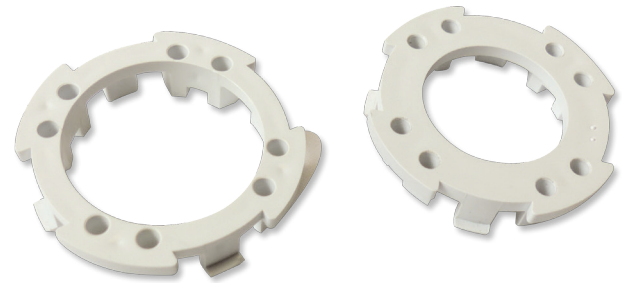
SIZES: Fits both 3/4" and 1/2" conduit

3. FEATURES & BENEFITS

- Quick and easy snap-in installation adapter for conduit installation in Primex Media Distribution Enclosures.
- Two sizes: 1" and 3/4" for standard conduit or cable management.
- Fits Primex Media Distribution Enclosure models: P2100, P3000, P4200, P6300

4. CONFIGURATIONS

Part #	Description
125-1022	3/4" - 1/2" reducer
125-0936	1" - 3/4" reducer



FOR MORE INFORMATION CONTACT:

20160 92A Avenue Langley BC V1M 3A4 Canada
 1.604.881.7875 1.877.881.7875 primexfits.com

1. PRODUCT SUMMARY

The Primex Reducers for Media Distribution Hubs allow for secure conduit placement within an installation.

Two reducer sizes provide both 3/4" and 1/2" conduit home runs back to the structured wiring enclosure.

Fits models: P2100, P3000, P4200, P6300

2. PRODUCT DIMENSIONS

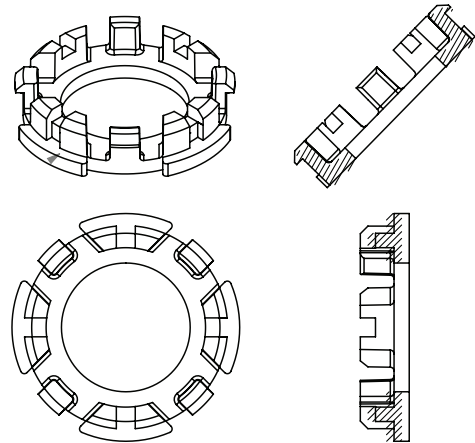
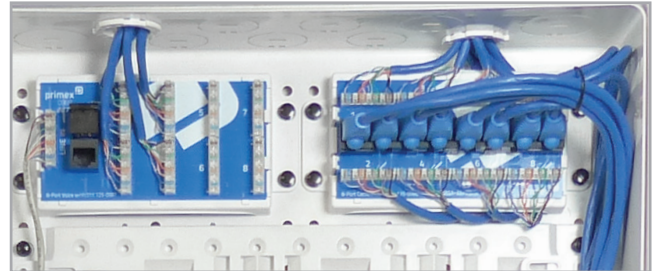
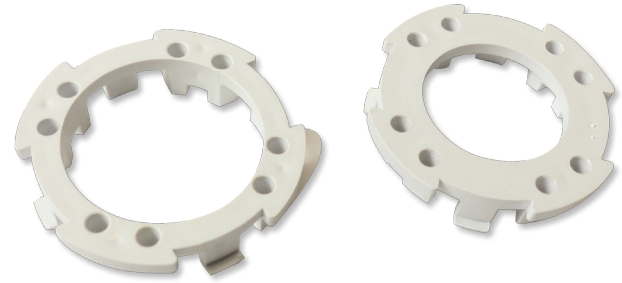
SIZES: Fits both 3/4" and 1/2" conduit

3. FEATURES & BENEFITS

- Quick and easy snap-in installation adapter for conduit installation in Primex Media Distribution Hubs.
- Two sizes: 1" and 3/4" for standard conduit or cable management.
- Fits Primex Media Distribution Hub models: P2100, P3000, P4200, P6300

4. CONFIGURATIONS

Part #	Description
125-1022	3/4" - 1/2" reducer
125-0936	1" - 3/4" reducer



FOR MORE INFORMATION CONTACT:

20160 92A Avenue Langley BC V1M 3A4 Canada
 1.877.881.7875 info@primexfits.com primexfits.com