

1. PRODUCT SUMMARY

The Primex Fiber Multi-Port is an easy-to-install lay-in grommet that seals out dust and rodents from enclosures.

Ideal for multiple drops from either a splitter or splice, the Multi-Port runs from 1-8 fibers between 2mm - 4.3mm.

Pre-connectorized cable can be placed into the enclosure without having to worry about the connector fitting through the grommet. It also allows for multiple entry at different times.

2. PRODUCT OPTIONS

1-8 fibers, 2mm-4.3mm

3. FEATURES & BENEFITS

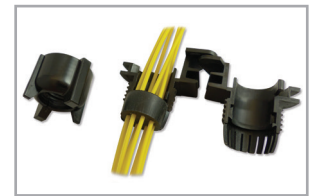
- Easy-to-install lay-in grommet.
- Multiple configurations from 1-8 fibers for application versatility.
- Keeps dust and rodents out of enclosure.
- Allows for pre-connectorization which reduces installation time.

4. PART NUMBER

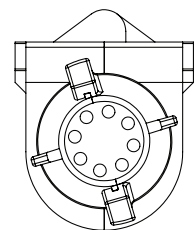
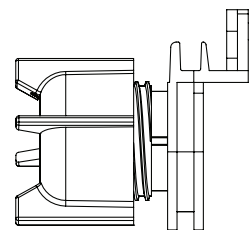
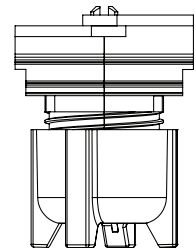
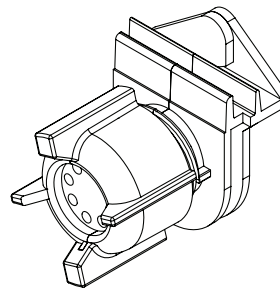
| Part # | Description | Cable Range |
|----------|----------------------------|-------------|
| 125-1025 | Multi-port Gland - 1 hole | 5.5-6.9mm |
| 125-1026 | Multi-port Gland - 2 holes | 2.5-3.5mm |
| 125-1027 | Multi-port Gland - 2 holes | 4.3-6.1mm |
| 125-1038 | Multi-port Gland - 4 holes | 2-3.25mm |
| 125-1028 | Multi-port Gland - 4 holes | 3.8-5.2mm |
| 125-1029 | Multi-port Gland - 6 holes | 2.6-3.6mm |
| 125-1012 | Multi-port Gland - 8 holes | 2.25-3mm |



1-in, 8-out application.



Lay-in cabling for easy installation.



FOR MORE INFORMATION CONTACT:

20160 92A Avenue Langley BC V1M 3A4 Canada
 1.604.881.7875 1.877.881.7875 primexfits.com